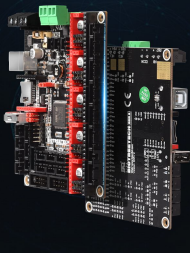


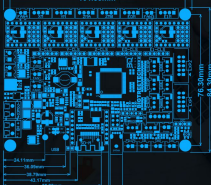
BIGTREETECH SKR 2



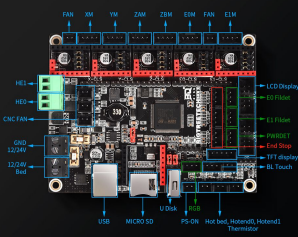
Specification

Appearance Size: 110mm x 85mm	Installation size: 102mm*76mm
Microprocessor: ARM Cortex-M4 CPU STM32F407VGT6	Input voltage: DC12V-24V
Logic voltage: DC 3.3V	Firmware support: Marlin, RepRap Firmware
WiFi interface: ESP-12S, ESP-07S	Fan interfaces: Three PWM fans, two always-on fans
Expansion interfaces: I2C, Servos, Probe, PS-ON, PWR-DET, FII-DET, RGB, etc	Motor driver: support TMC5160, TMC2209, TMC2205, TMC2206, TMC2208, TMC2130, 51800, LV8729, DRV8825, A4988, etc., and can be externally connected to a motor drive.
Supported stepper driver interfaces: SPI, UART, STEP/DIR	Motor driver sockets: X, Y, Z (double Z axis), E0, E1, five channels (each channel also has a closed loop drive interface)
Temperature sensor interfaces: TH0, TH1, TB, 3 Channels, 100K NTC (thermal resistance)	Display interfaces: Serial touch screen, SPI touch screen, LCD display
PC communication interfaces: USB type B with configurable BAUD	Command file format support: G-code or according to the installed OS
Supported kinematics: XYZ, delta, kossel, Ultimaker, corexy, etc.	Recommended software: Cura, Simplify3D, pronterface, Repetier-host, Makerware

Size



Wiring diagram



Product features

Powerful main control chip

ARM Cortex-M4 series STM32F407VGT6 main control chip with a core frequency of 168MHz



Compatible with Marlin and RepRapFirmware



Marlin Mode



RepRap

Added safety design

Advanced thermistor protection circuit

Thermal runaway circuit protection added